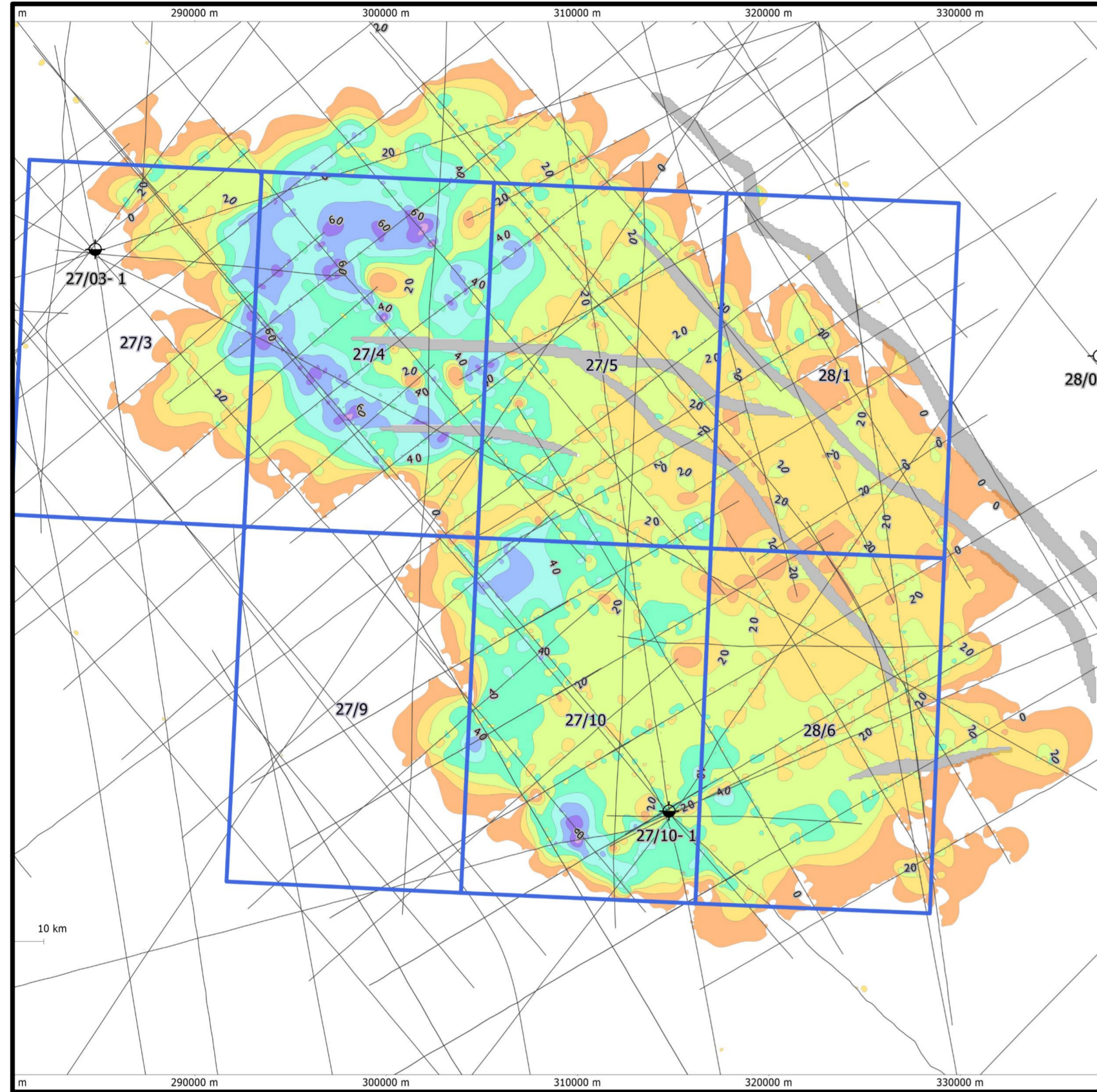


The Devil's Hole Horst 1967 oil discovery, West Central Graben

The largest undeveloped oil discovery in the UKCS? 1.4 BBO Prospective Resources - GCA Verified Volumes

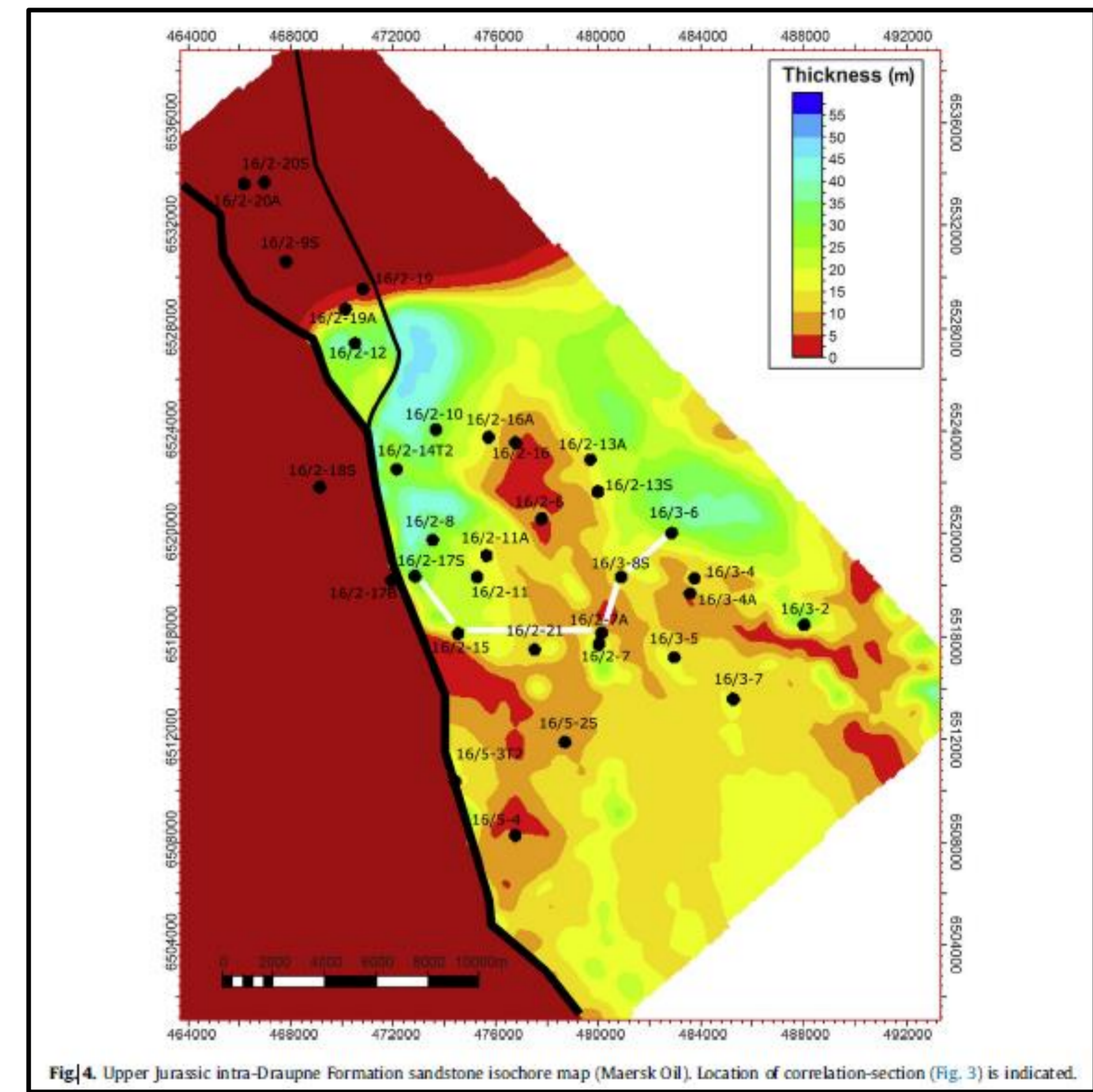
The Elephants in the room

1.4 BBO Prospective Resources
(Source Gaffney Cline Dec 2019)



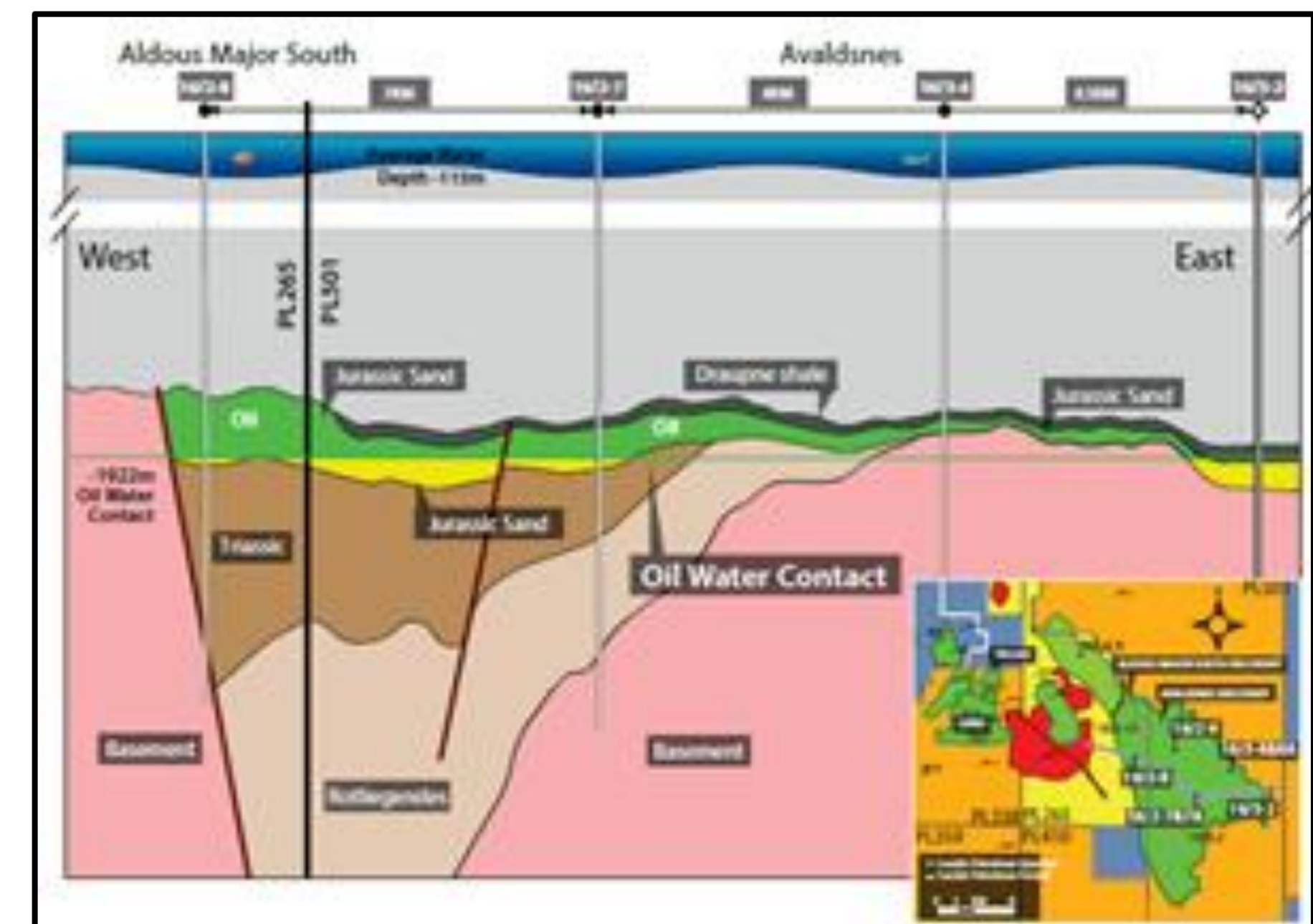
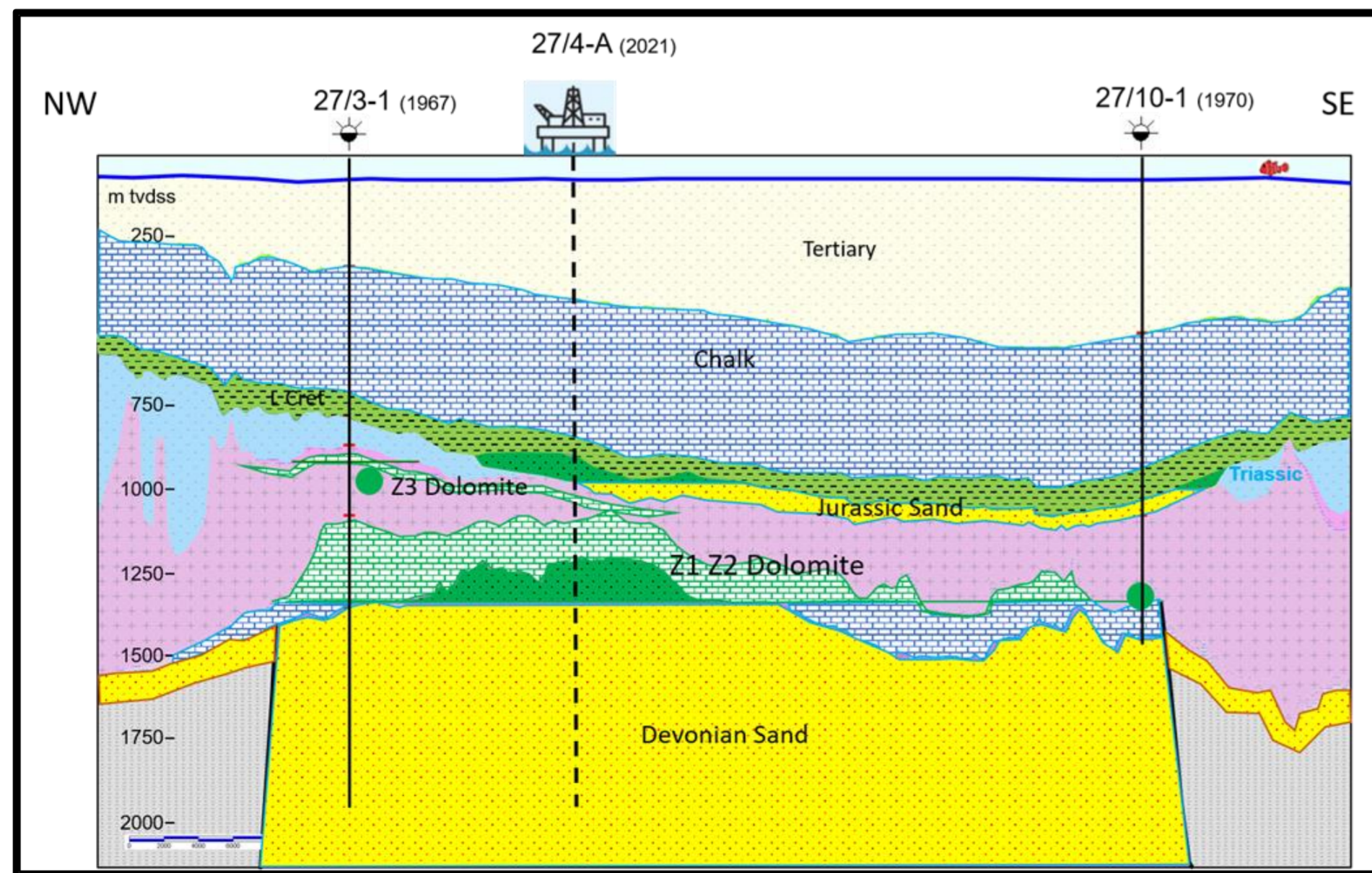
Jurassic Sand Thickness
(20 to 40M)

2.7 BBO Proven Reserves
(Source Equinor 5 Oct 2019)



Jurassic Sand Thickness
(20 to 40M)

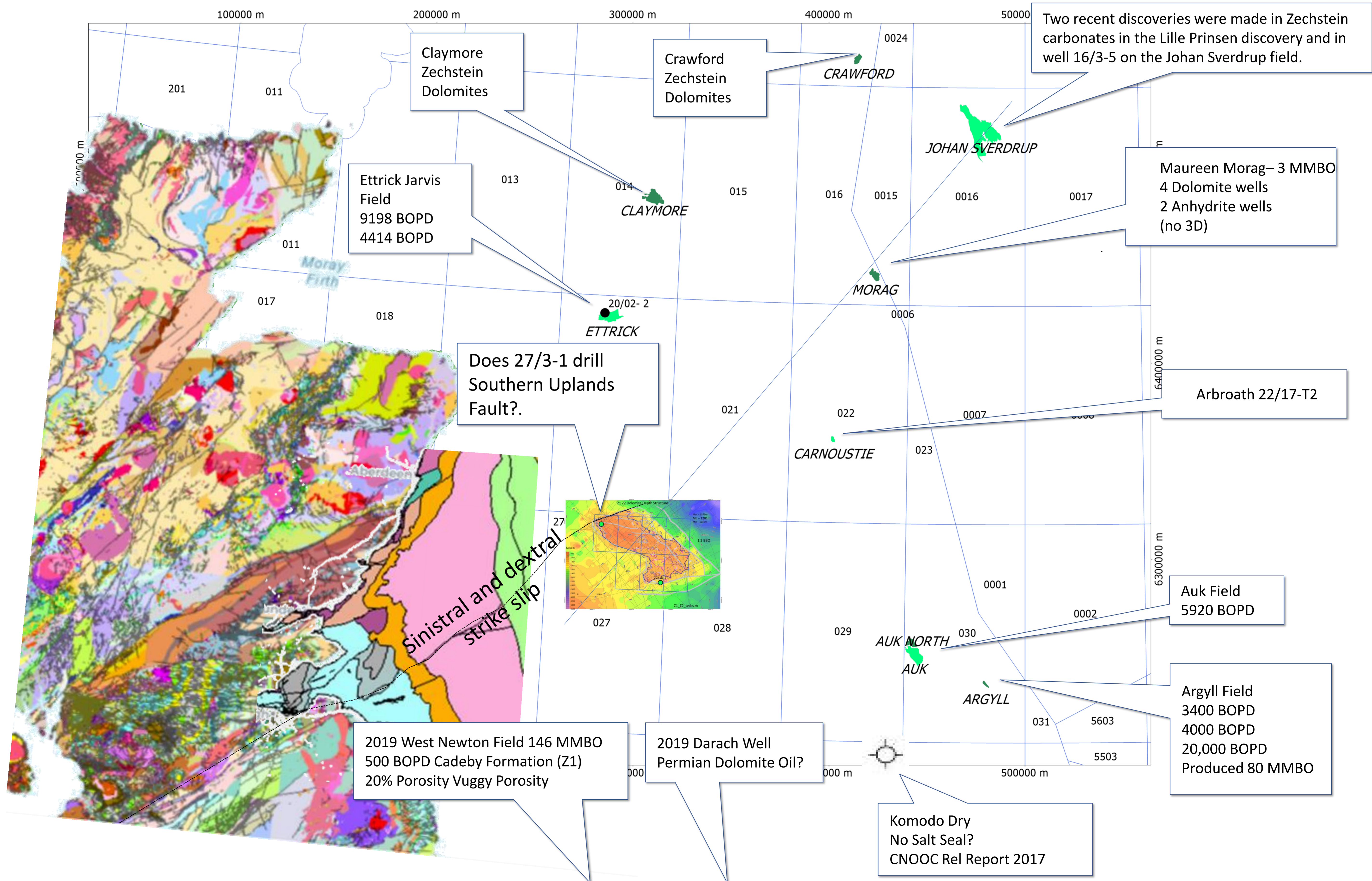
Fig.4. Upper Jurassic intra-Draupne Formation sandstone isochore map (Maersk Oil). Location of correlation-section (Fig. 3) is indicated.



The Devil's Hole Horst 1967 oil discovery, West Central Graben

The largest undeveloped oil discovery in the UKCS? 1.4 BBO Prospective Resources - GCA Verified Volumes

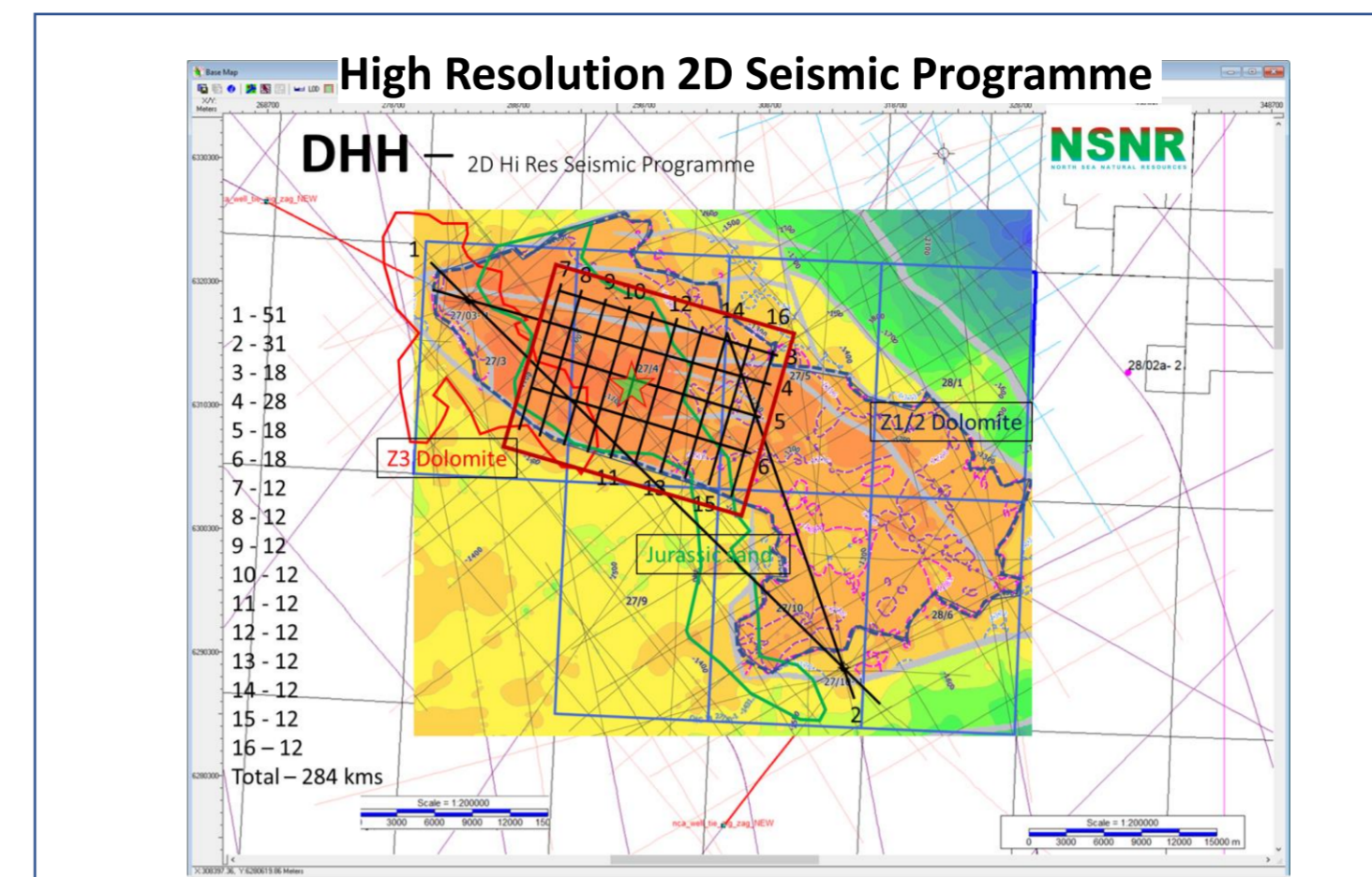
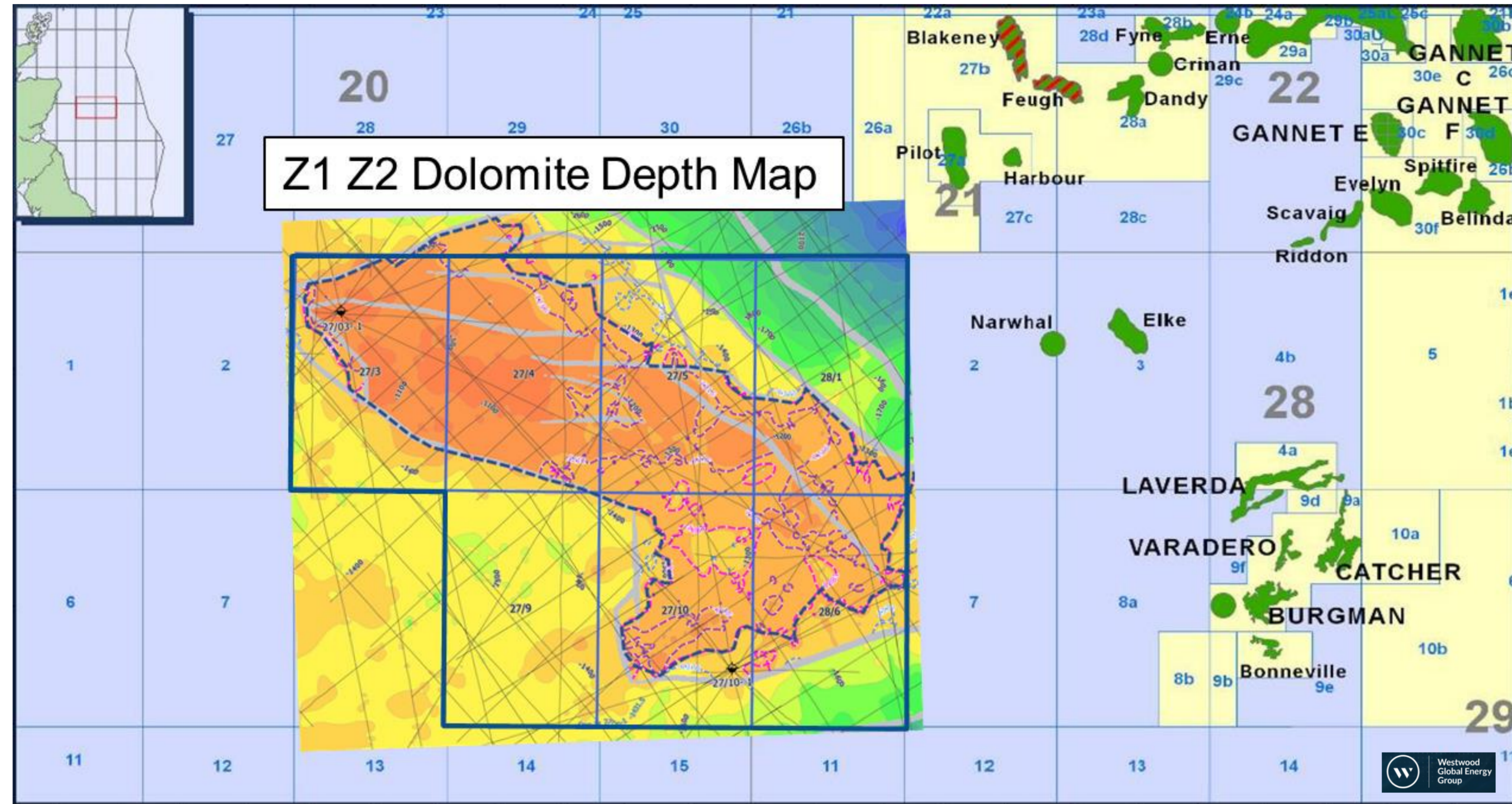
Permian Dolomites Flow like a train



The Devil's Hole Horst 1967 oil discovery, West Central Graben

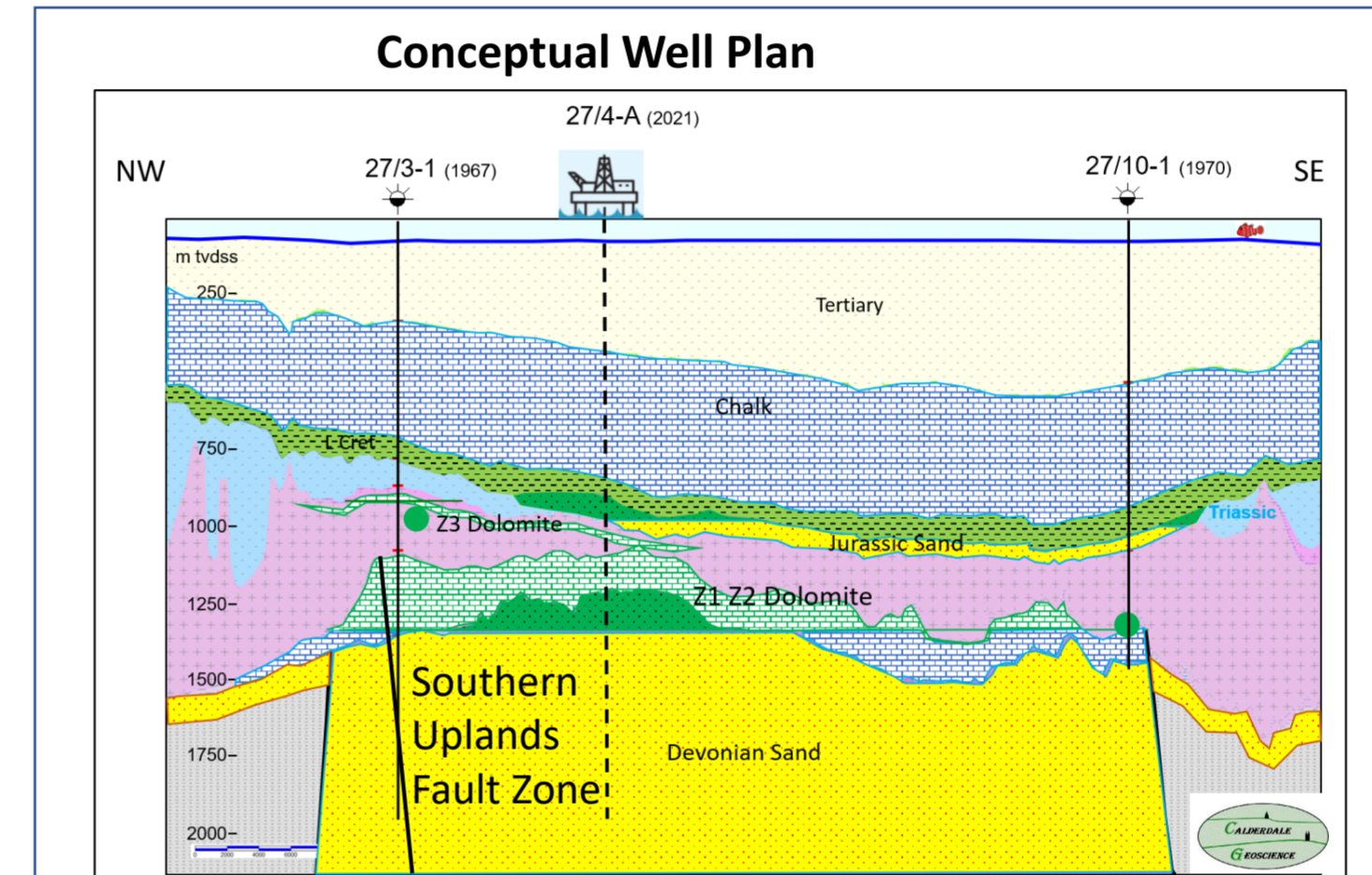
The largest undeveloped oil discovery in the UKCS? 1.4 BBO Prospective Resources - GCA Verified Volumes

Devil's Hole Horst Prospect

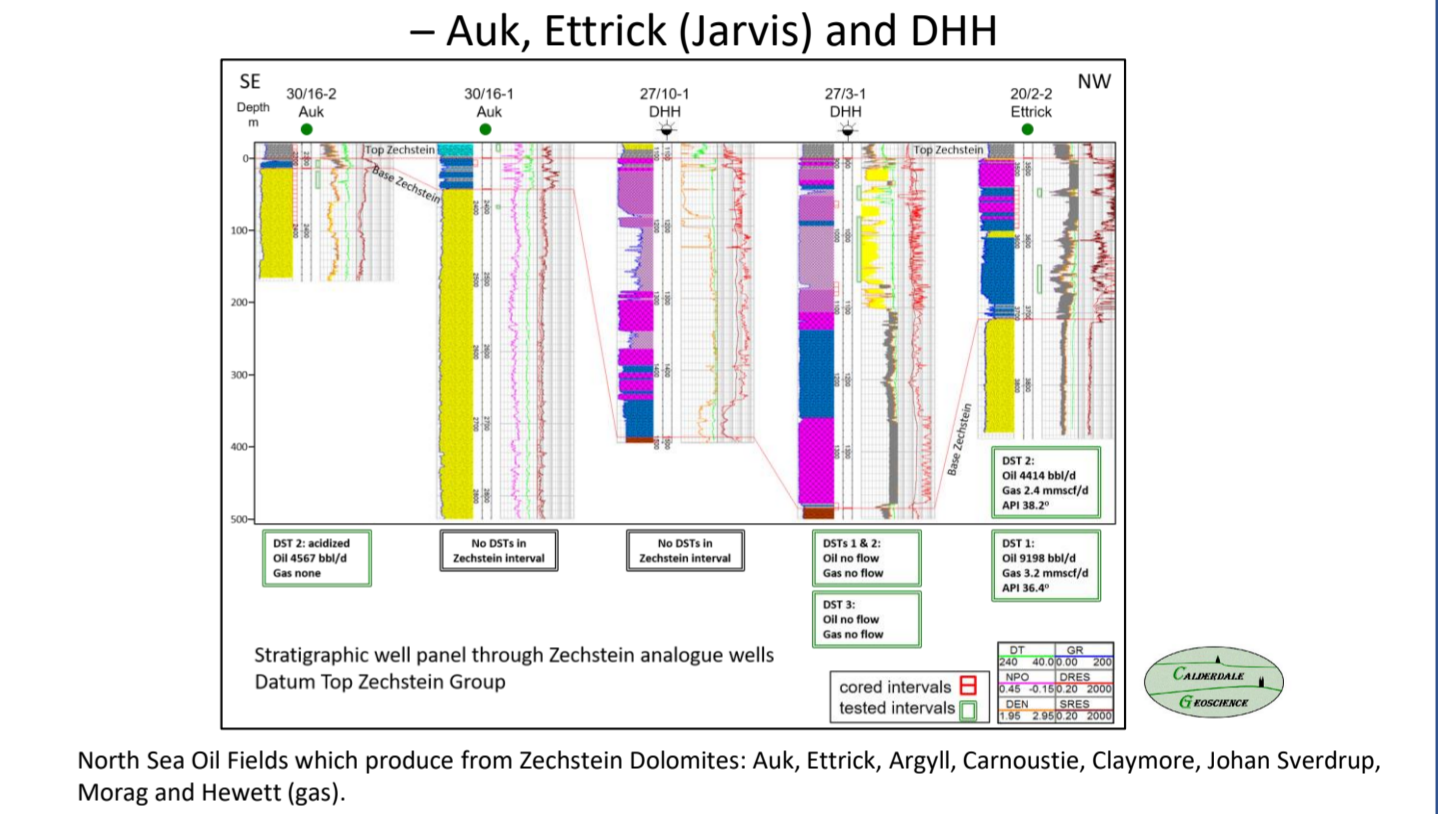


Gaffney Cline Verified Resources

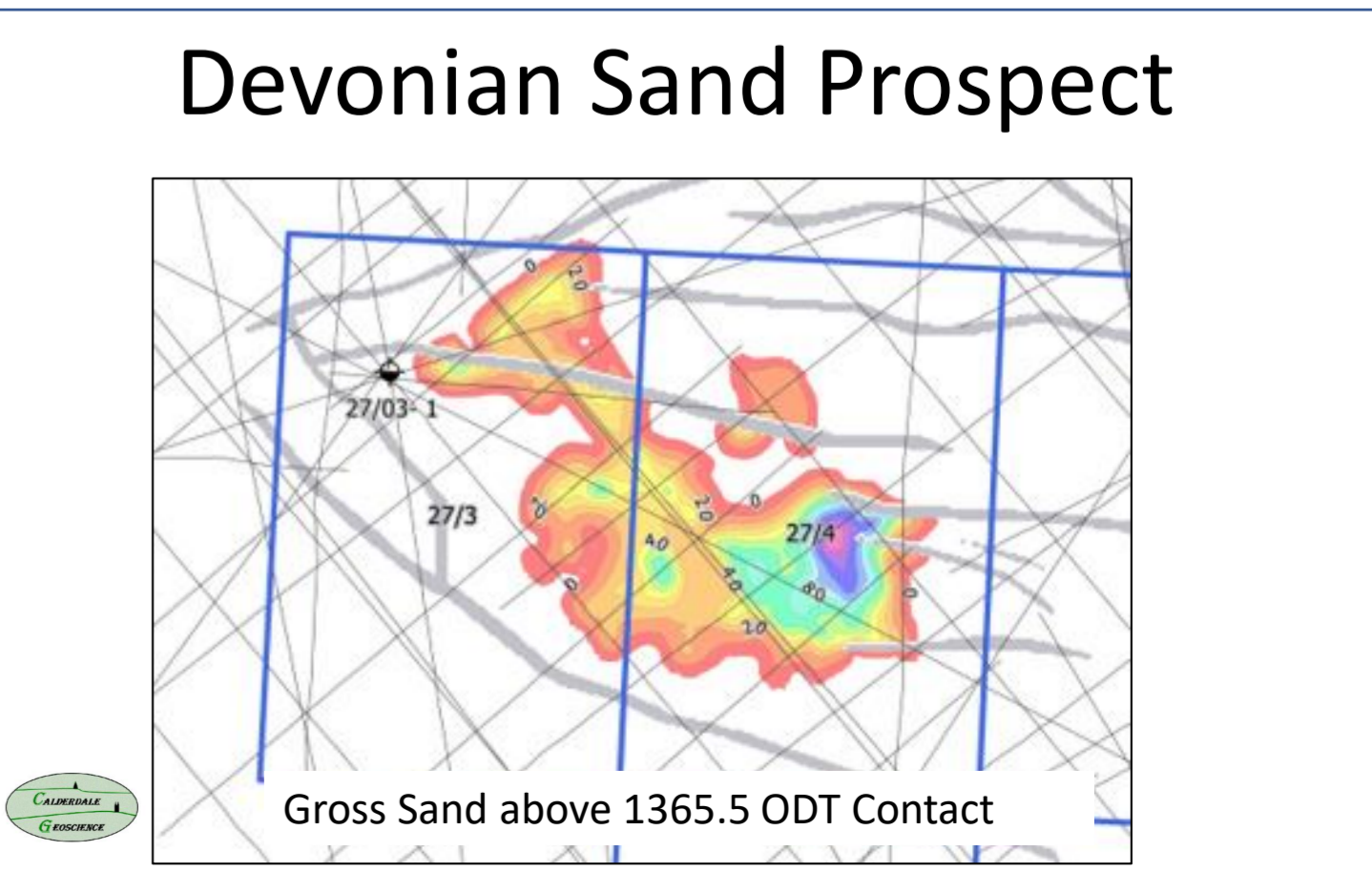
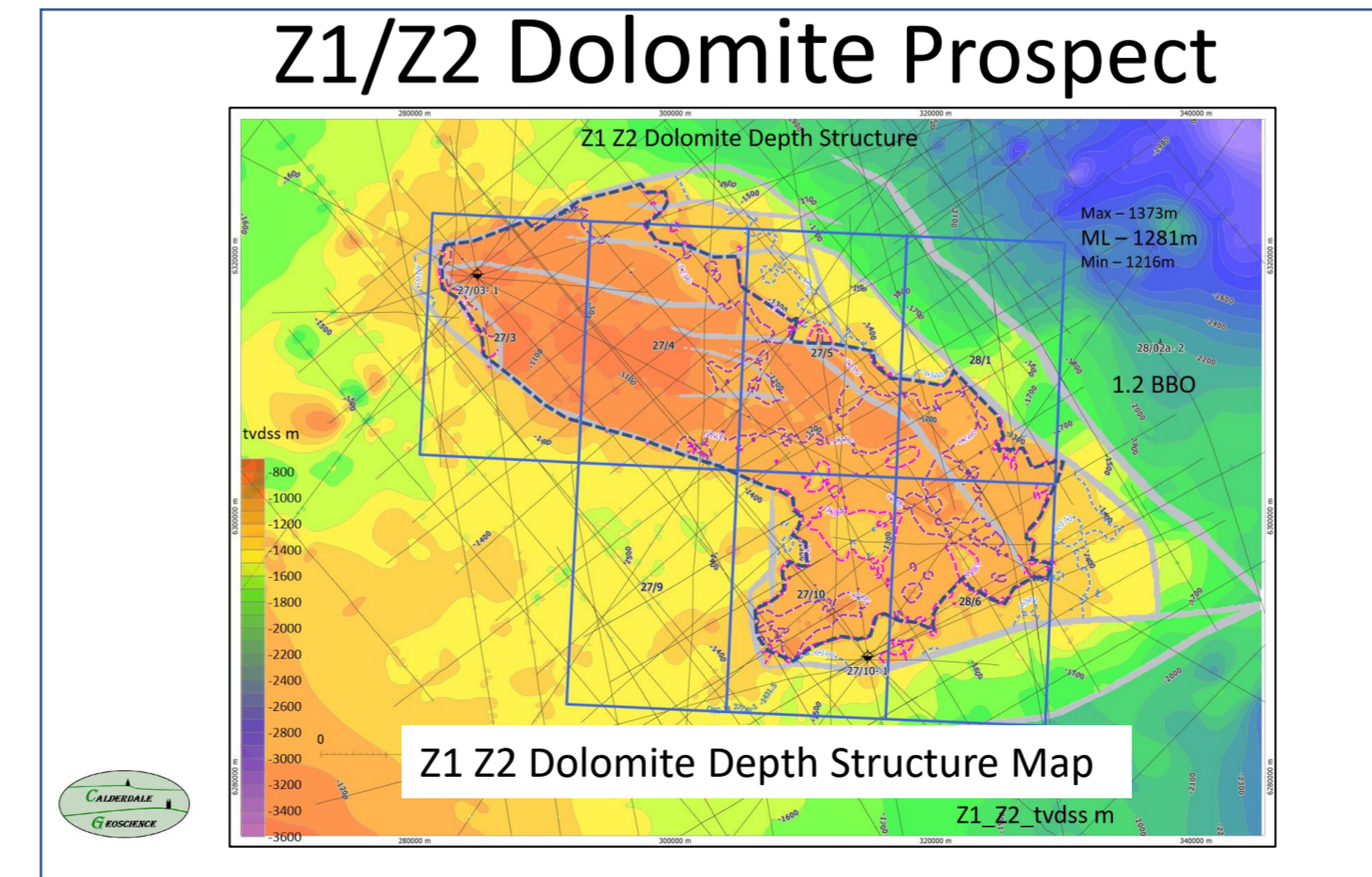
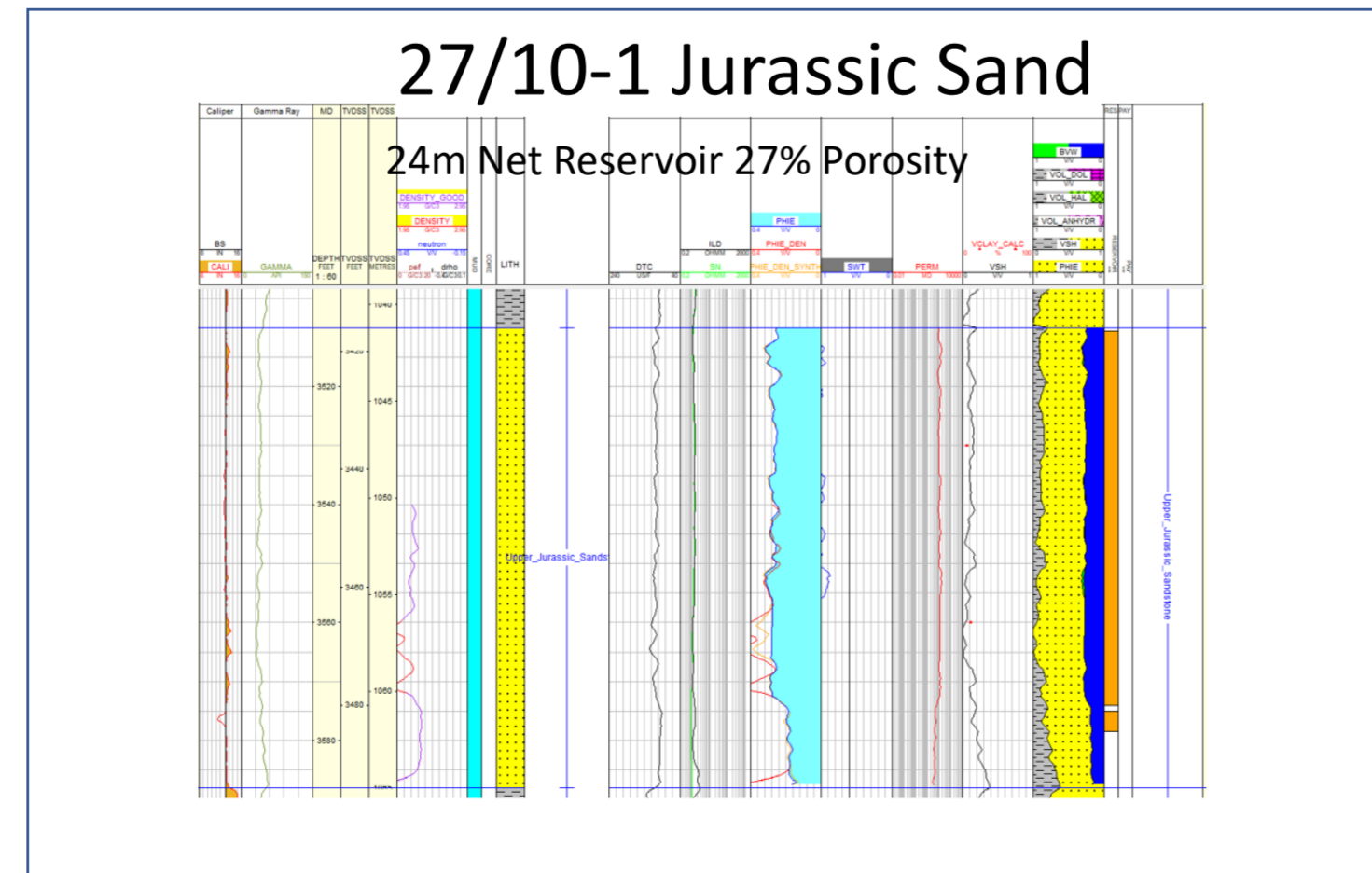
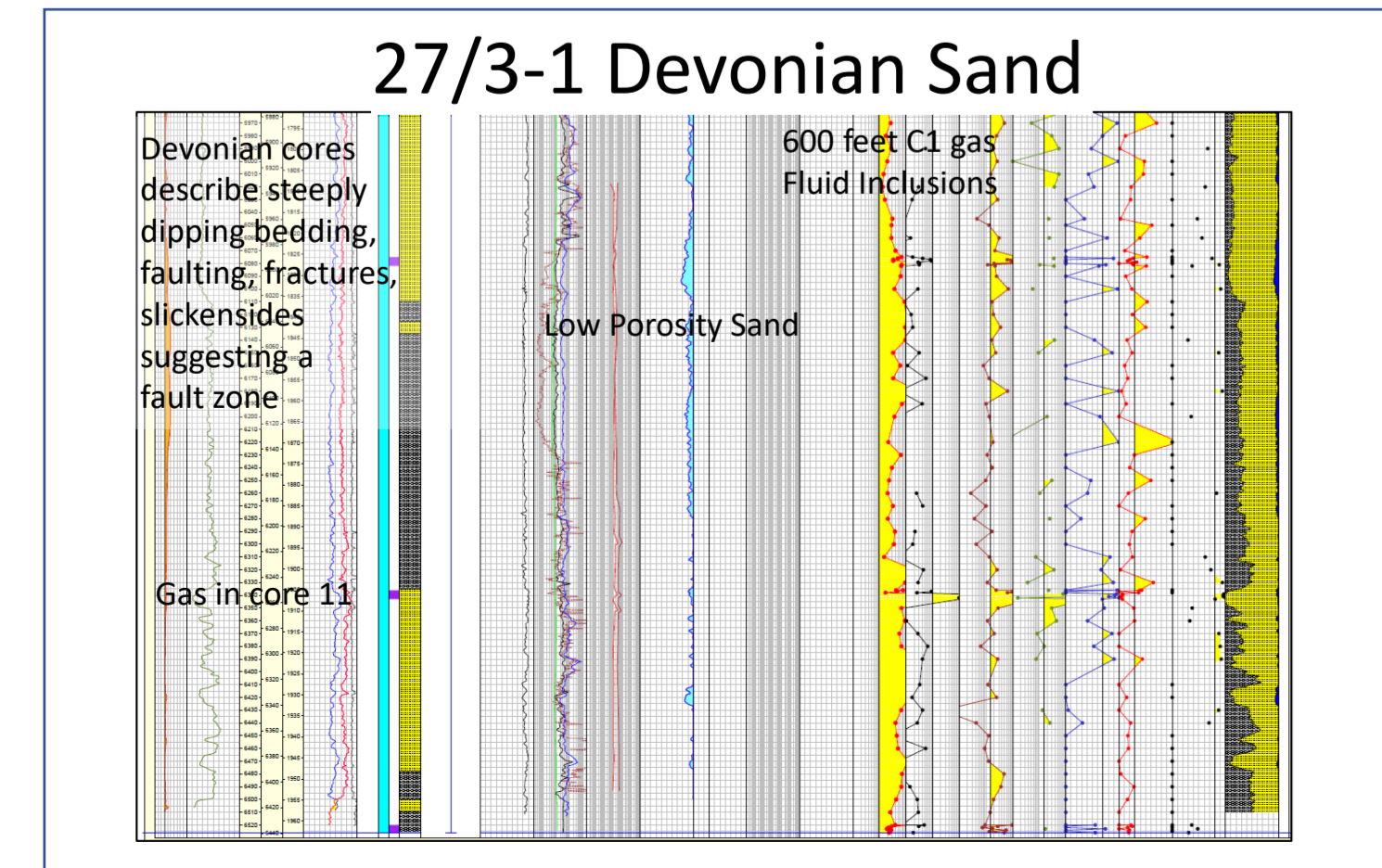
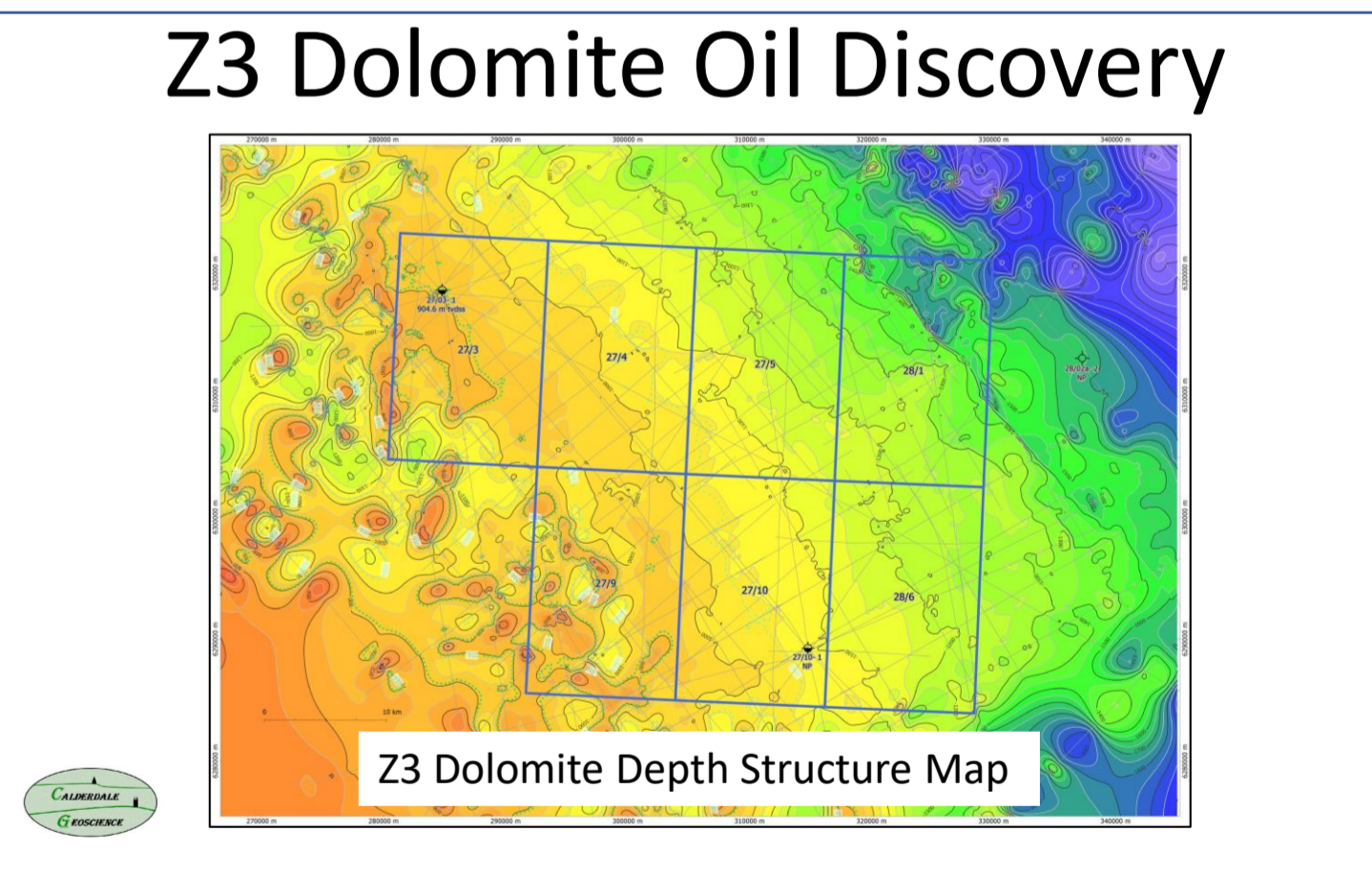
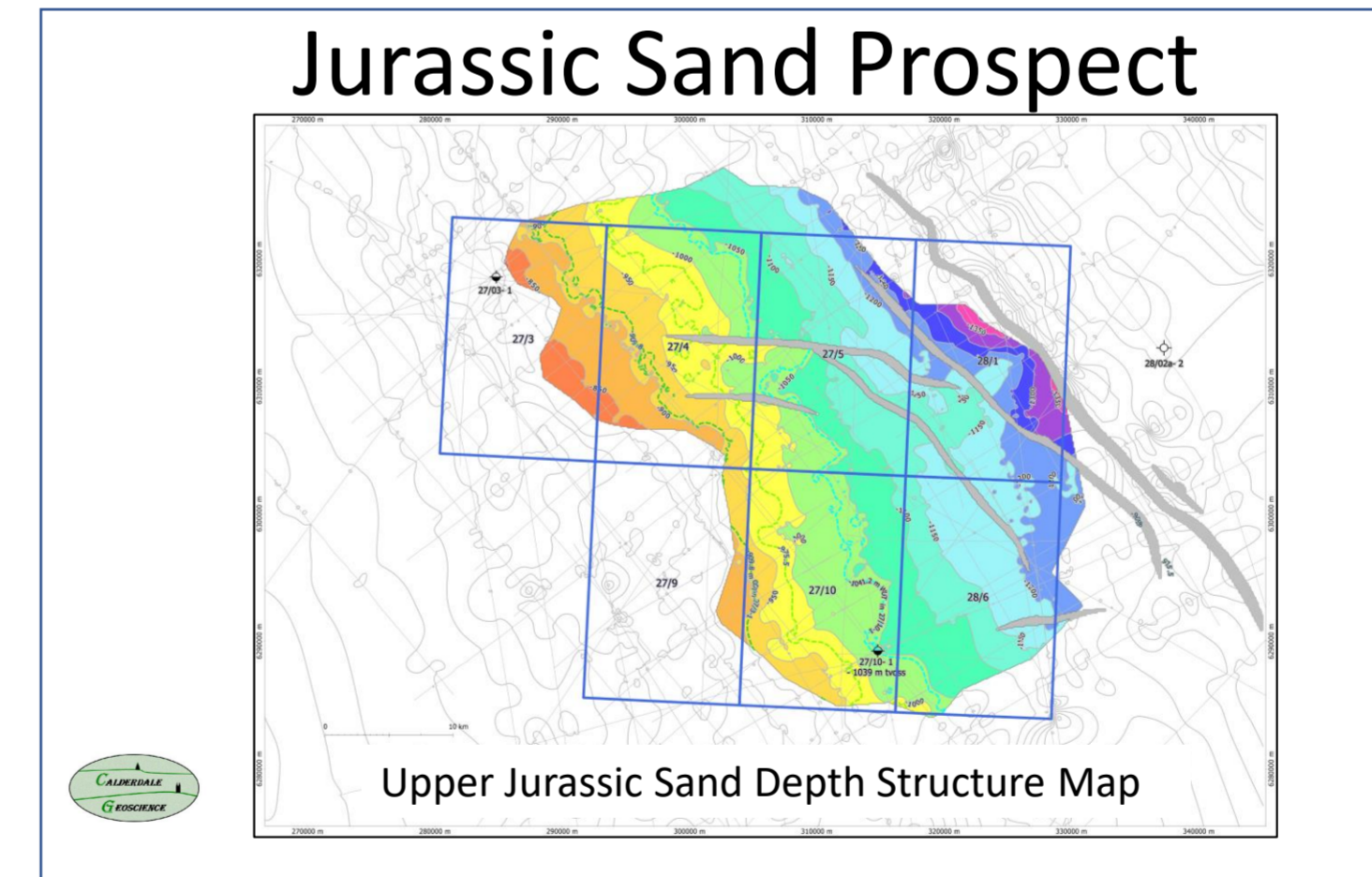
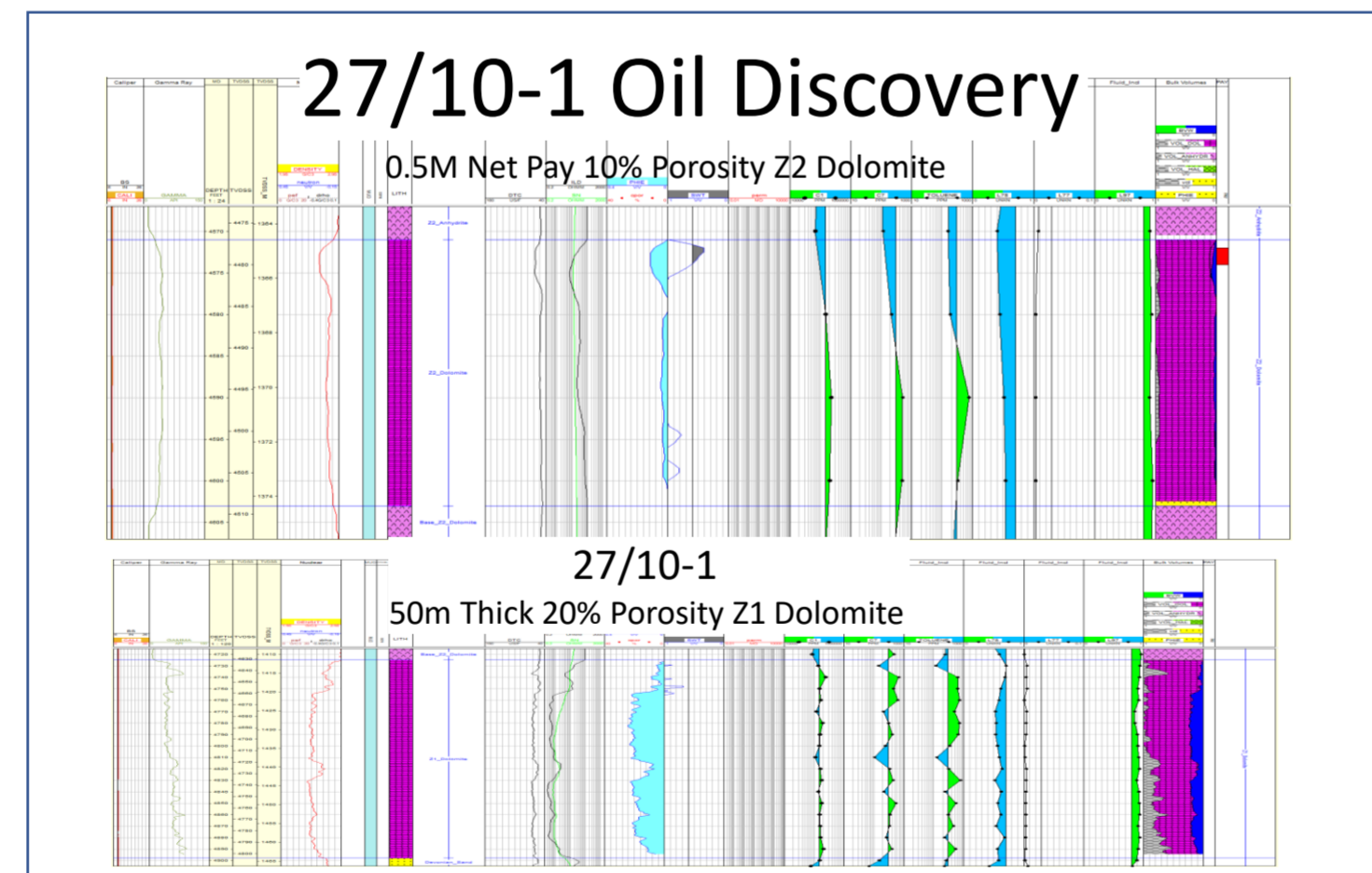
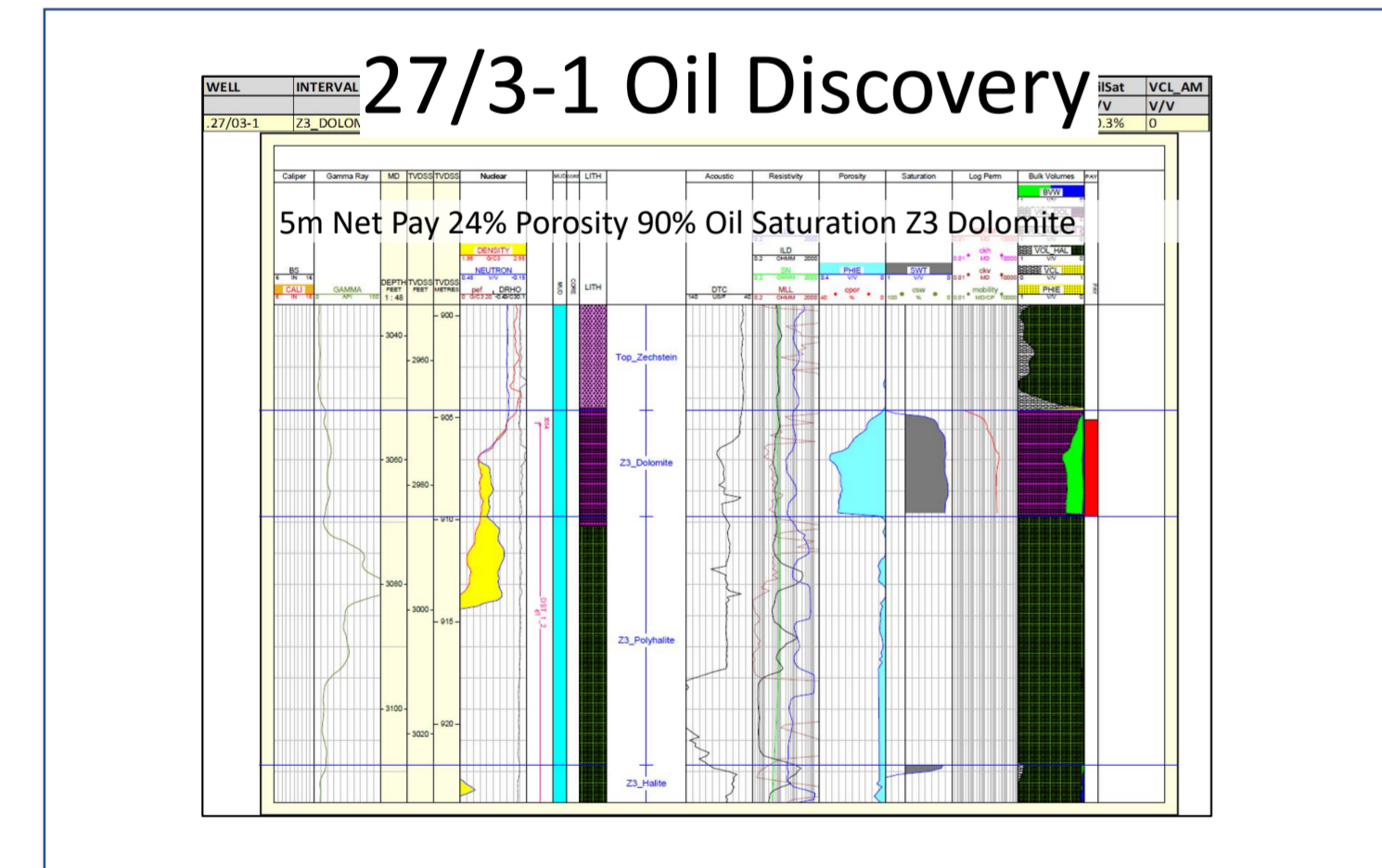
Reservoir	P50 Prospective Resources
Jurassic	1.0 BBO
Z3 Dolomite	25 MMBO
Z1 Z2 Dolomite	290 MMBO
Devonian Sand	10 MMBO
Total	1.4 BBO



North Sea Zechstein Oil Fields Correlation



Volumes, Petrophysics, Maps

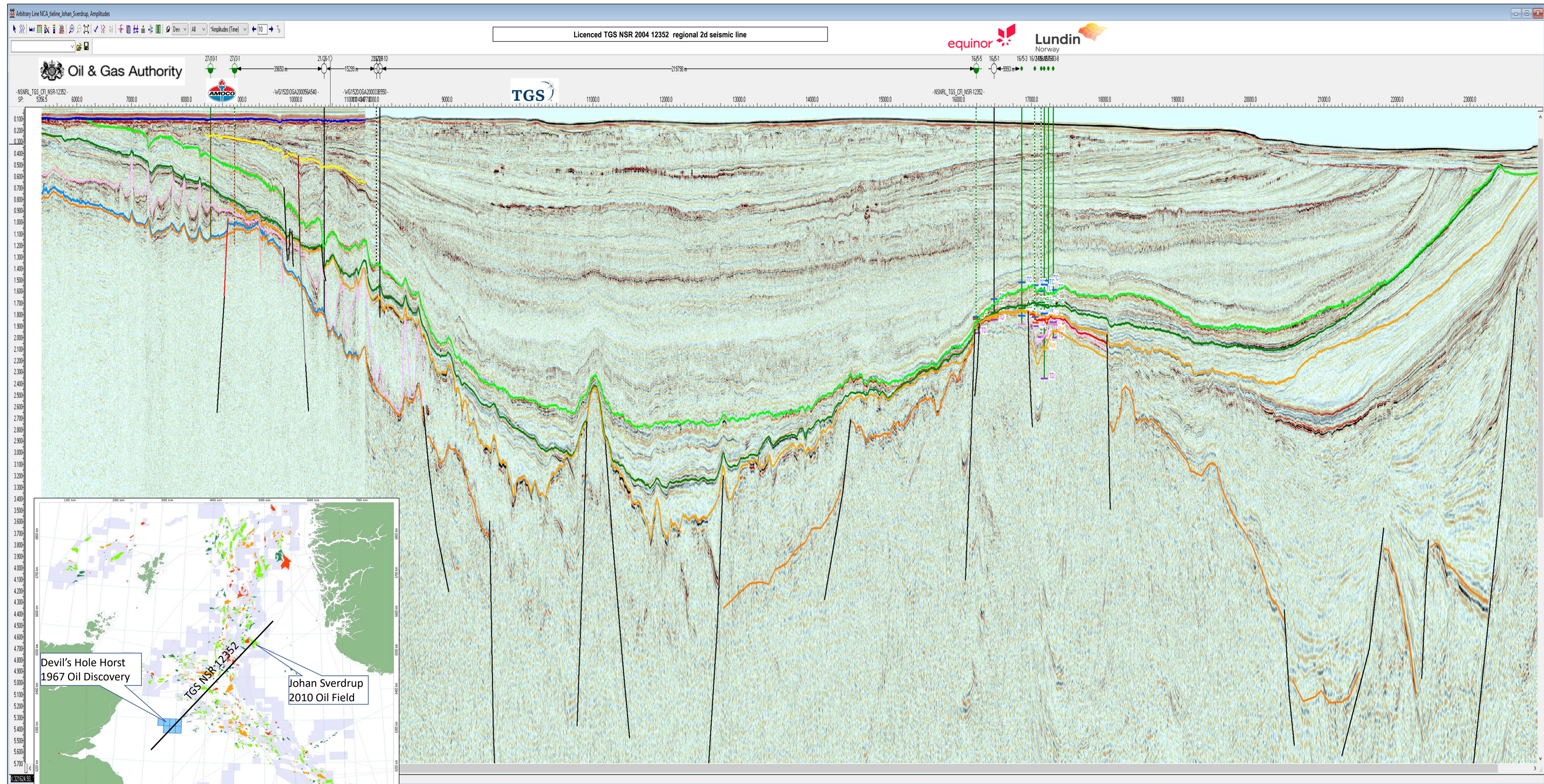


The Devil's Hole Horst 1967 oil discovery, West Central Graben

The largest undeveloped oil discovery in the UKCS? 1.4 BBO Prospective Resources - GCA Verified Volumes

Devil's Hole Horst Oil Discovery
– 1.4 BBO Prospective Resources

Johan Sverdrup Oil Field
– 2.7 BBO Proven Reserves (Source Equinor 5 Oct 2019)



The DHH and Johan Sverdrup Giants on the same page

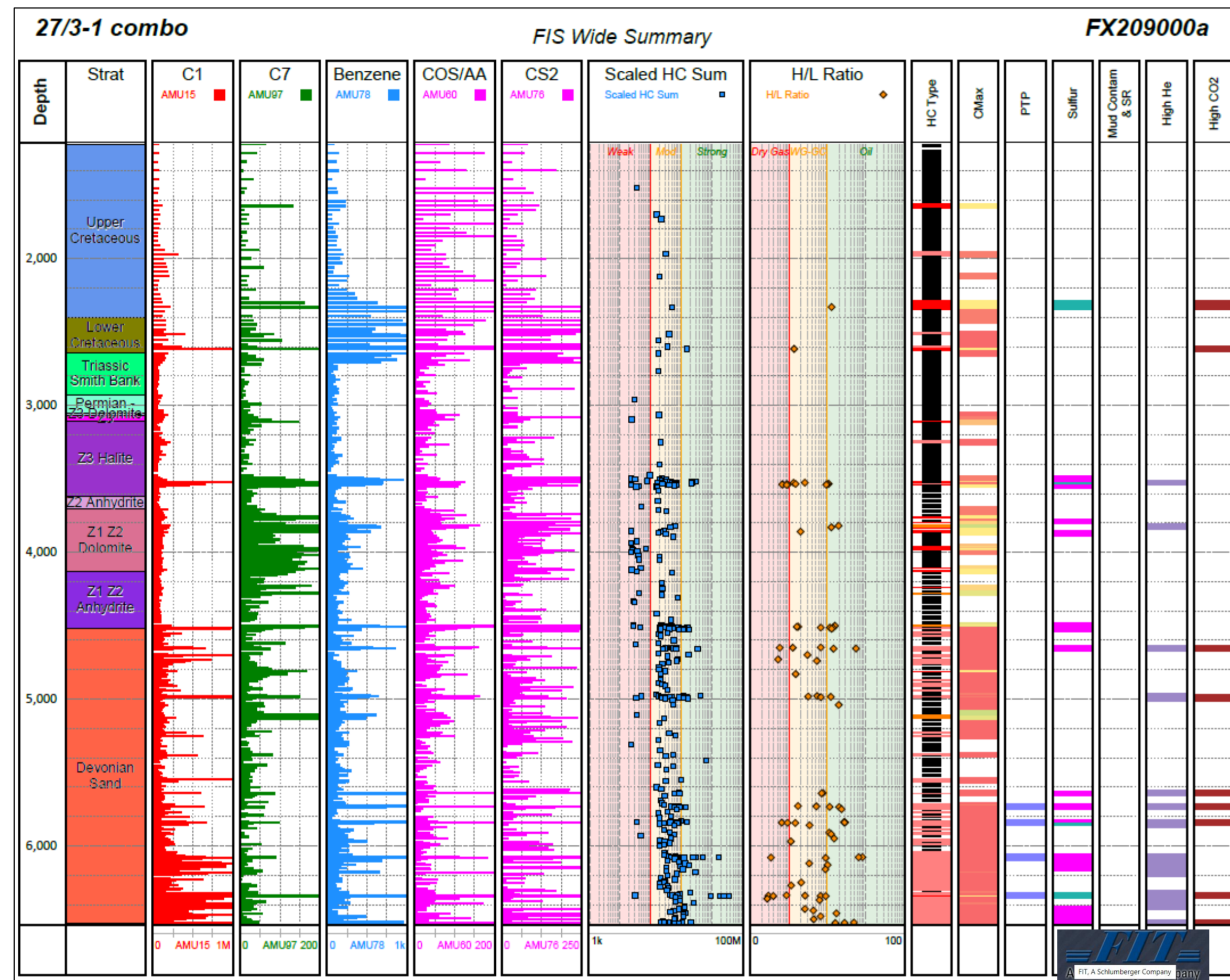
The Devil's Hole Horst 1967 oil discovery, West Central Graben

The largest undeveloped oil discovery in the UKCS? 1.4 BBO Prospective Resources - GCA Verified Volumes

The Geochemistry derisks DHH

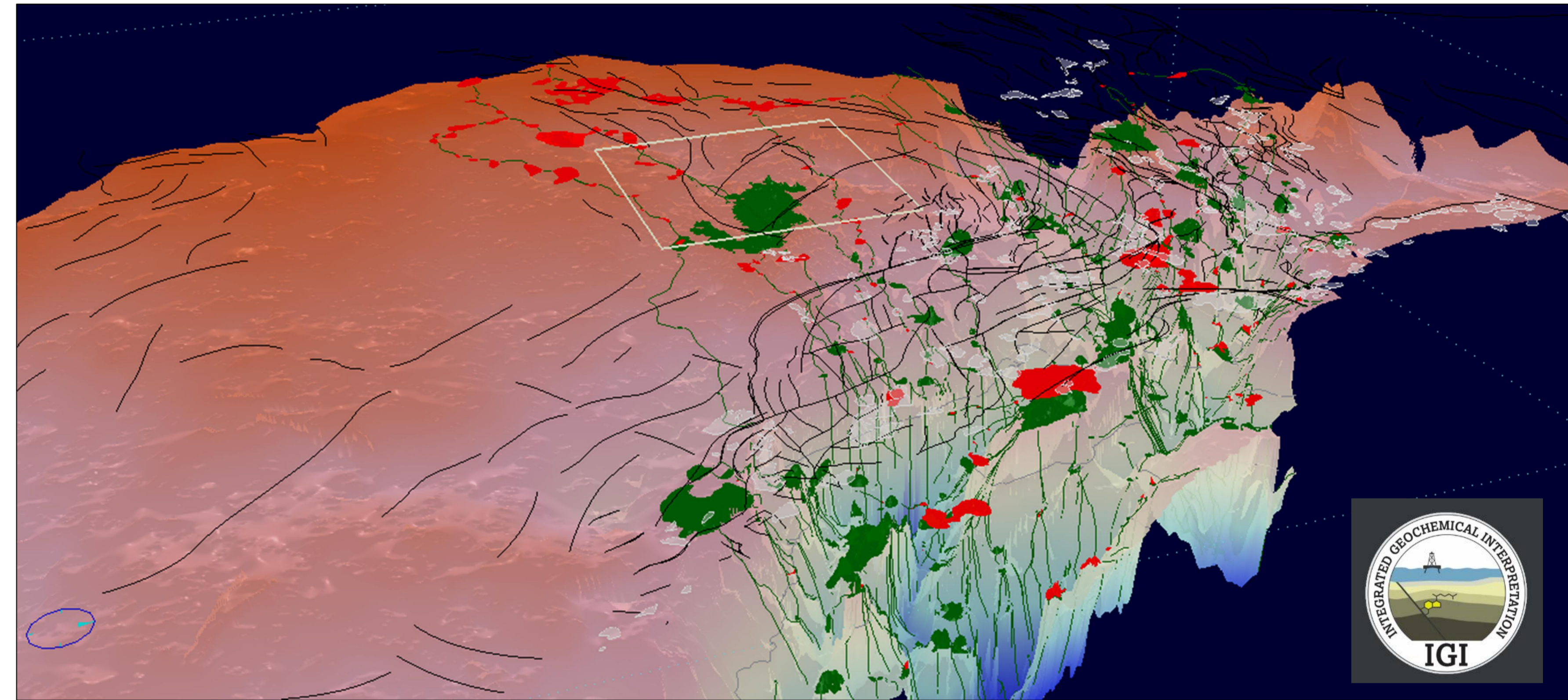
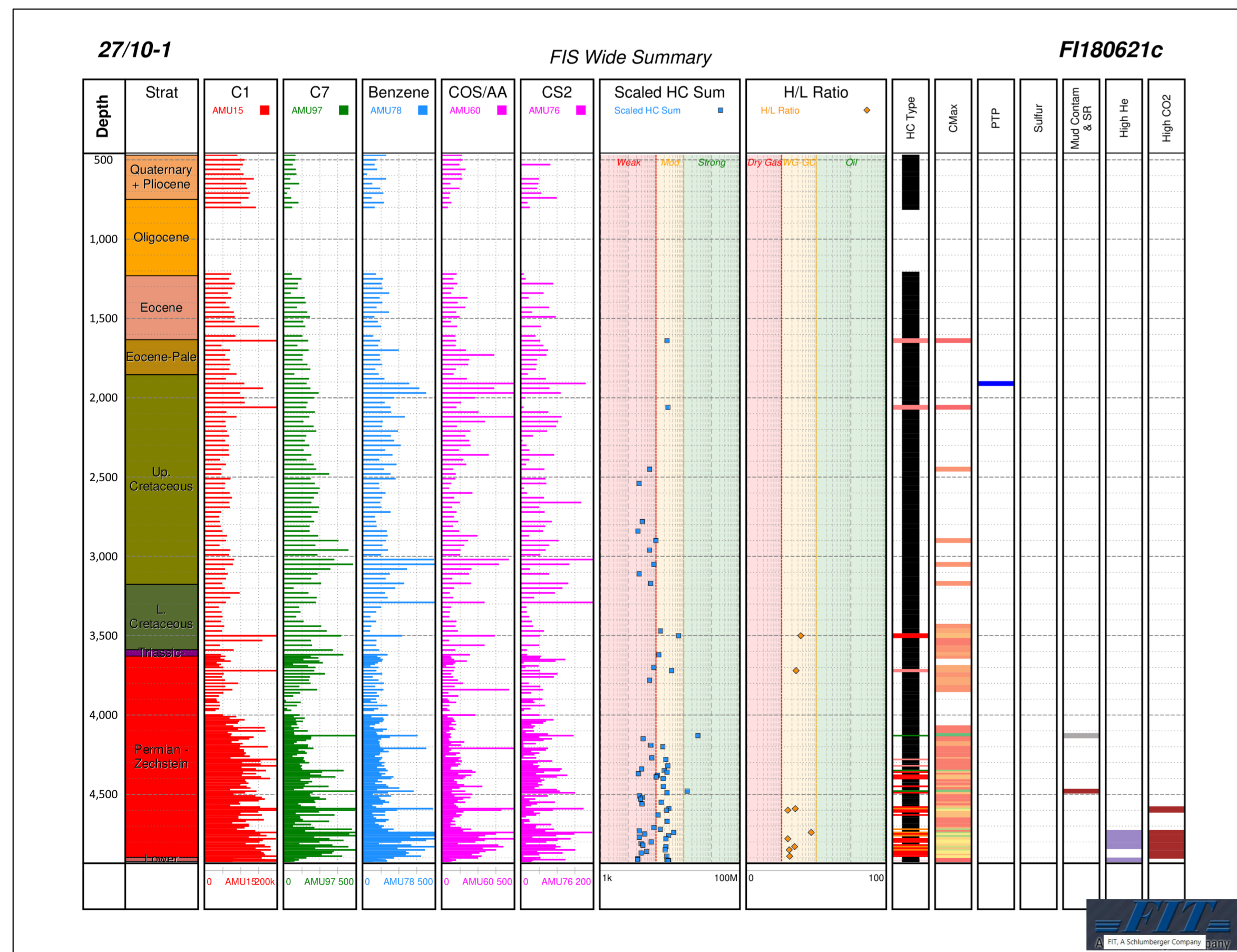
27/3-1 - Amoco 1967

Fluid Inclusions

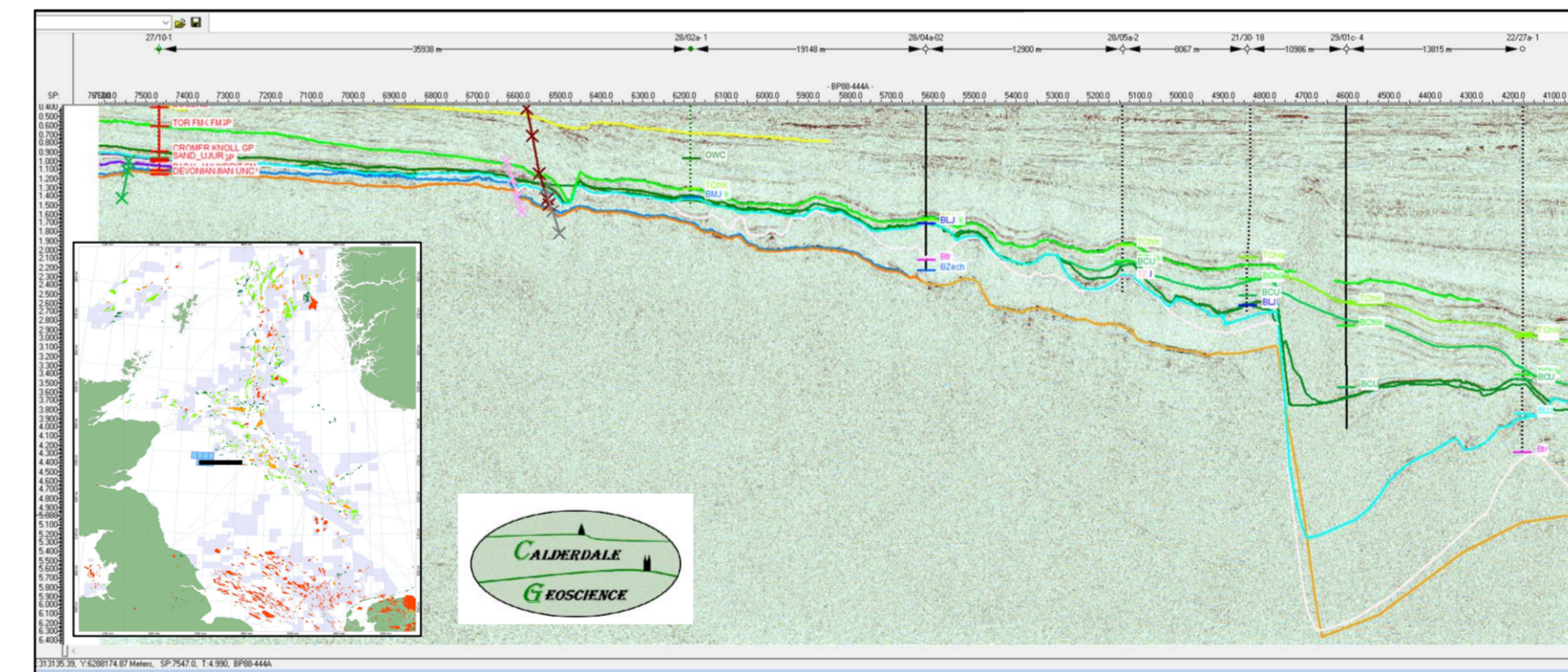


27/10-1 - Amoco 1970

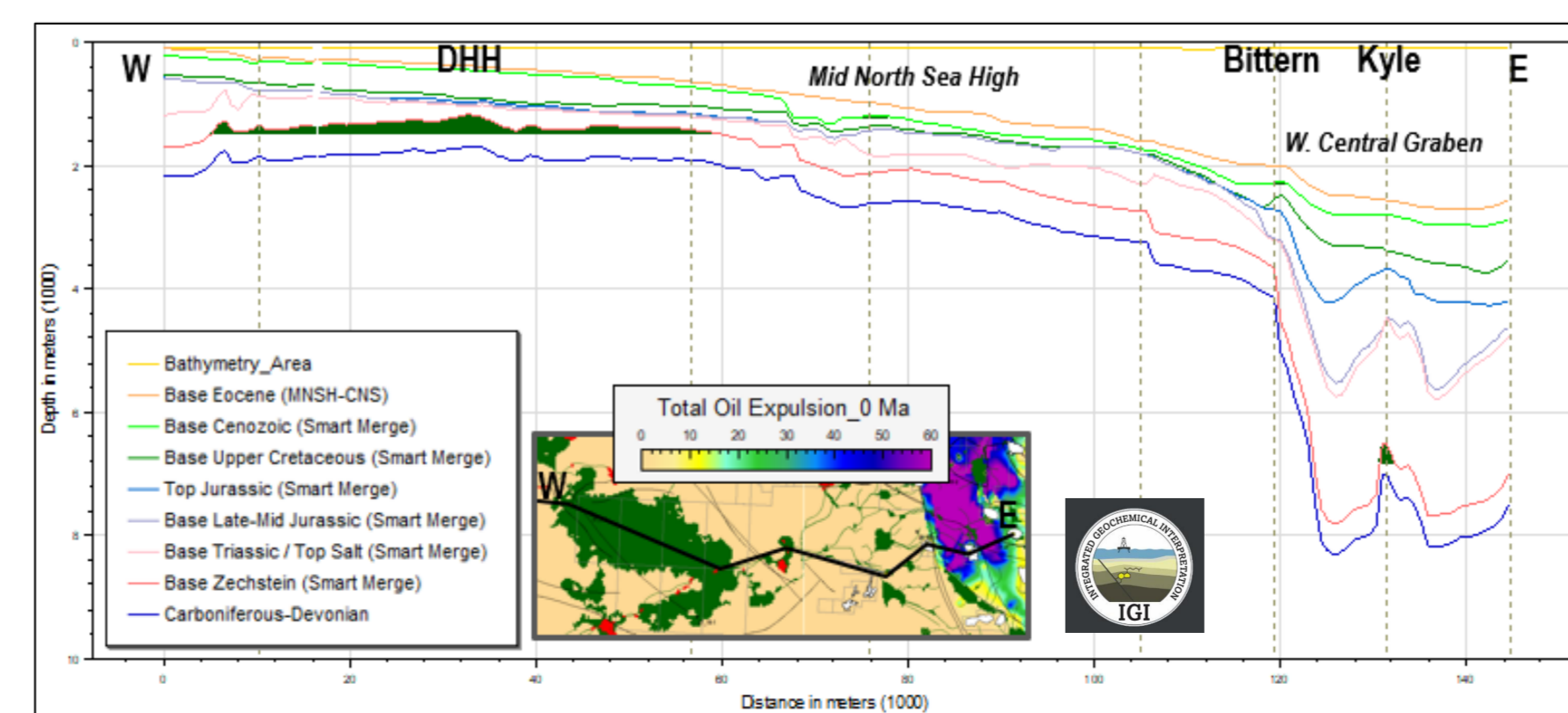
Fluid Inclusions



Released BP 1988 444a 2d seismic line



E-W trending cross section along "migration path 3" from the West Central Graben to the DHH prospect, with oil and gas accumulations shown in green and red, respectively.



Oil Migration from kitchen to prospect with various Migration Losses Modelled

Migration losses mmbae/km ²	Oil charge (Million bbl)		Vol. oil @ 37-0 Ma (% of total)
	Total cumulated	From 37 to 0 Ma	
5	11380	11380	100
10	11380	11167	98
20	11374	8941	79
40	7188	4648	65
80	1798	0	0

Timing of Oil Generation in Central Graben Kimmeridge Clay Source Kitchen

